

BALTIMORE CITY OFFICE OF SUSTAINABILITY

Bruna Attila, LEED AP, CFM, PMP

Coastal Planner & Tidal Floodplain Coordinator

March 21, 2023



Programs and Initiatives

Baltimore Sustainability Plan

Disaster Preparedness and Planning Project

Climate Action Plan

Floodplain Management

Critical Area Management Program

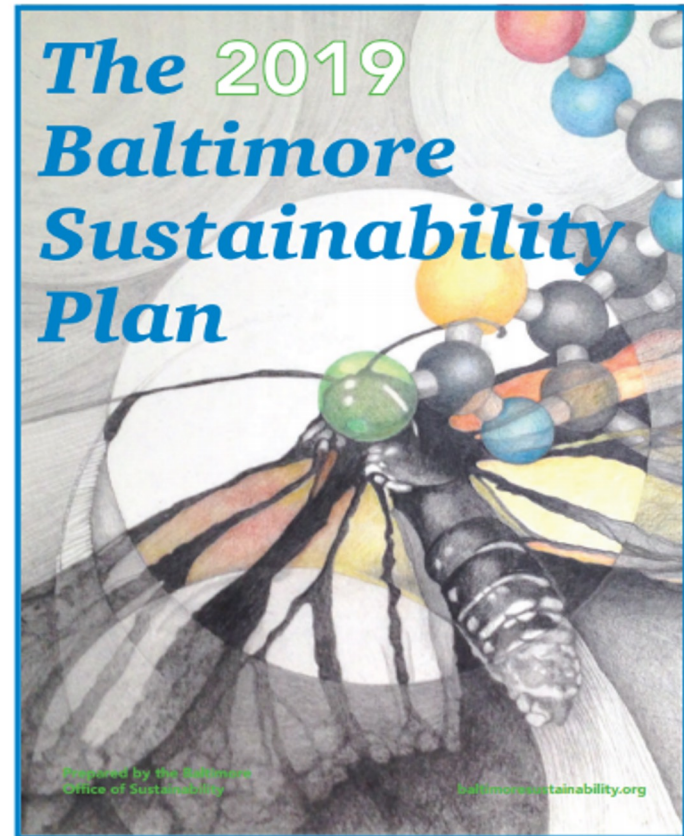
Baltimore City Nuisance Flood Plan

Resiliency Hubs Program



Baltimore Sustainability Plan

- Adopted on Earth Day 2019, articulates a new vision for a more resilient, equitable, and sustainable Baltimore
- Uses an equity lens to improve planning, decision-making, and resource allocation leading to more racially equitable policies and programs
- Incorporated feedback from > 1,000 residents



Baltimore Sustainability Plan

Sustainability Plan Framework

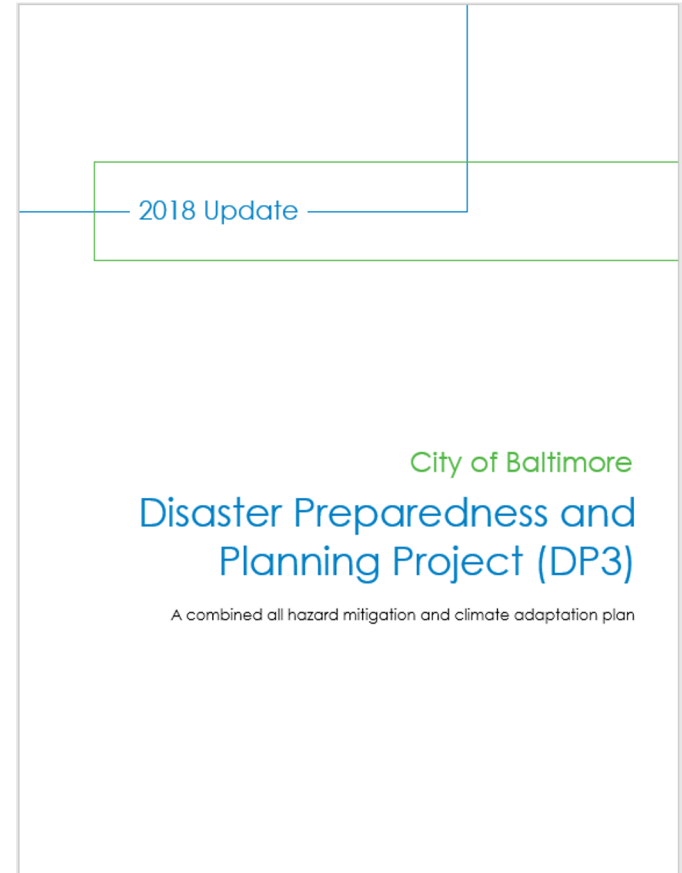


Disaster Preparedness and Planning Project (DP3)

The City's approach to hazard mitigation and climate adaptation

Vision

Baltimore will be a city whose daily activities reflect a commitment shared by government, business, and residents to **reduce or eliminate impacts from current and future hazards**



Disaster Preparedness and Planning Project (DP3)

Goals

- Protect the **health, safety and welfare** of Baltimore City residents and visitors
- **Prevent damage** to structures, infrastructure, and critical facilities
- Build **resilience** and disaster prevention and planning into all programs, policies, and infrastructure (public and private)
- Enhance the City of Baltimore's **adaptive capacity** and build institutional structures that can **cope with future conditions** that are beyond past experience
- Promote hazard mitigation and climate adaptation **awareness and education** throughout the City of Baltimore



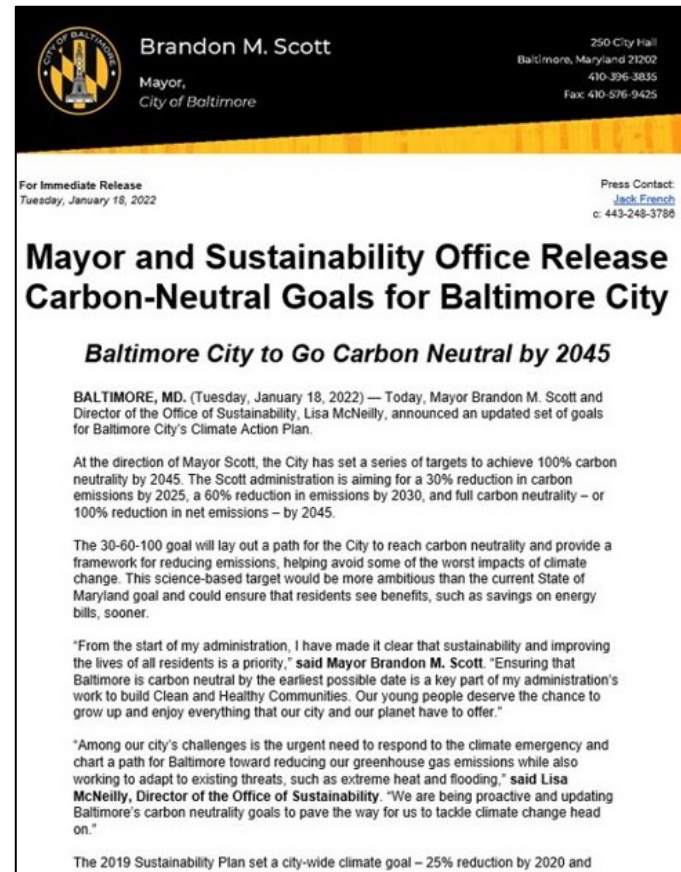
Climate Action Plan (CAP)

- Update happening now

Goal

30% reduction in carbon emissions by 2025, a 60% reduction by 2030 and a full carbon neutrality, or 100% reduction in net emissions, by 2045 (relative to 2007)

- Reducing Greenhouse Gas Emissions
- Adapting to the effects of climate change
- Addressing and reducing unequal impact of climate change on vulnerable communities, especially low-income communities of color



National Flood Insurance Program (NFIP)

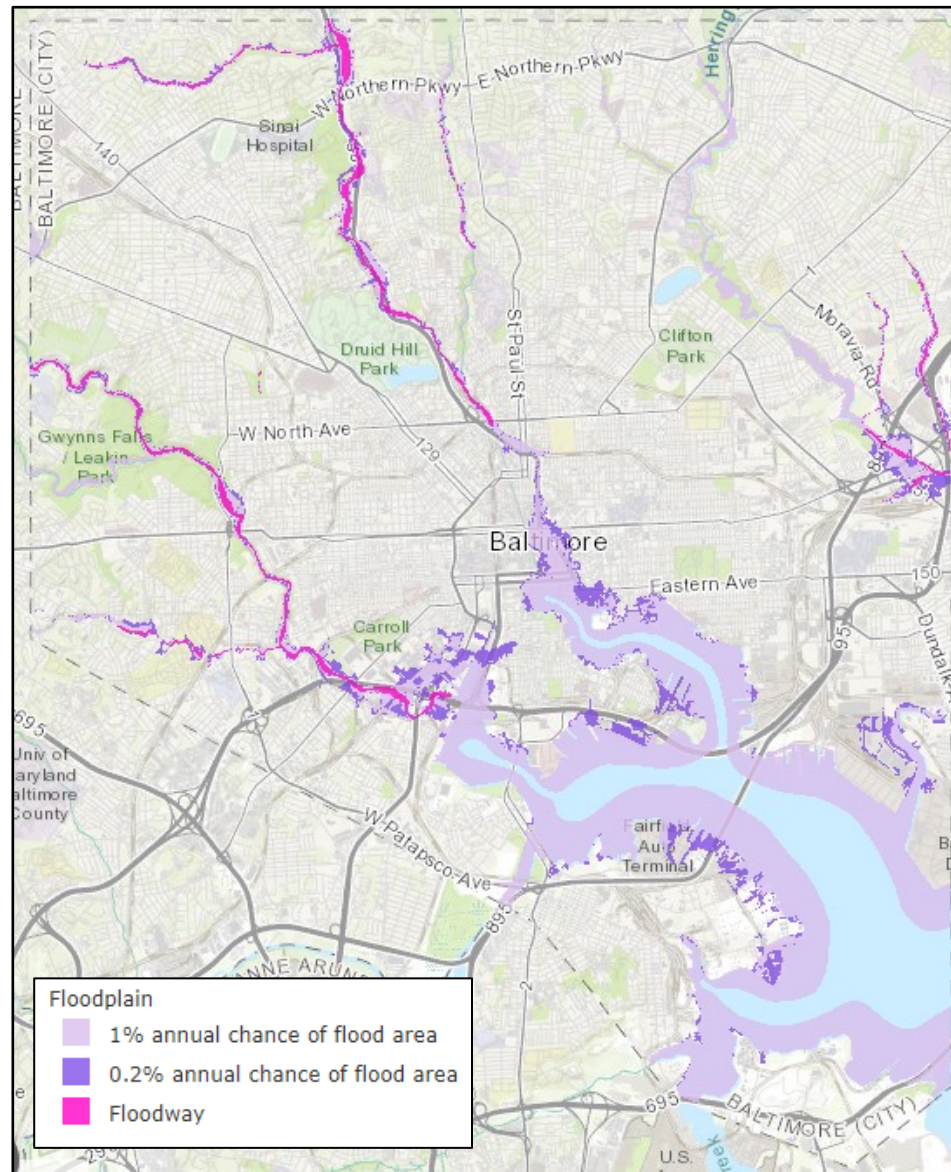
- FEMA provides subsidized flood insurance to participating jurisdictions through the National Flood Insurance Program.
- Jurisdictions must establish a floodplain management program.

City of Baltimore Participation

- Higher floodplain management standards
 - Geographic range
- Enforcement:
 - Permit system (construction permits)
 - Permits are required: all construction projects
 - Resilience in mind
 - Protects people and property from flood damage
 - Financial resources to recover



Baltimore City Regulated Floodplain

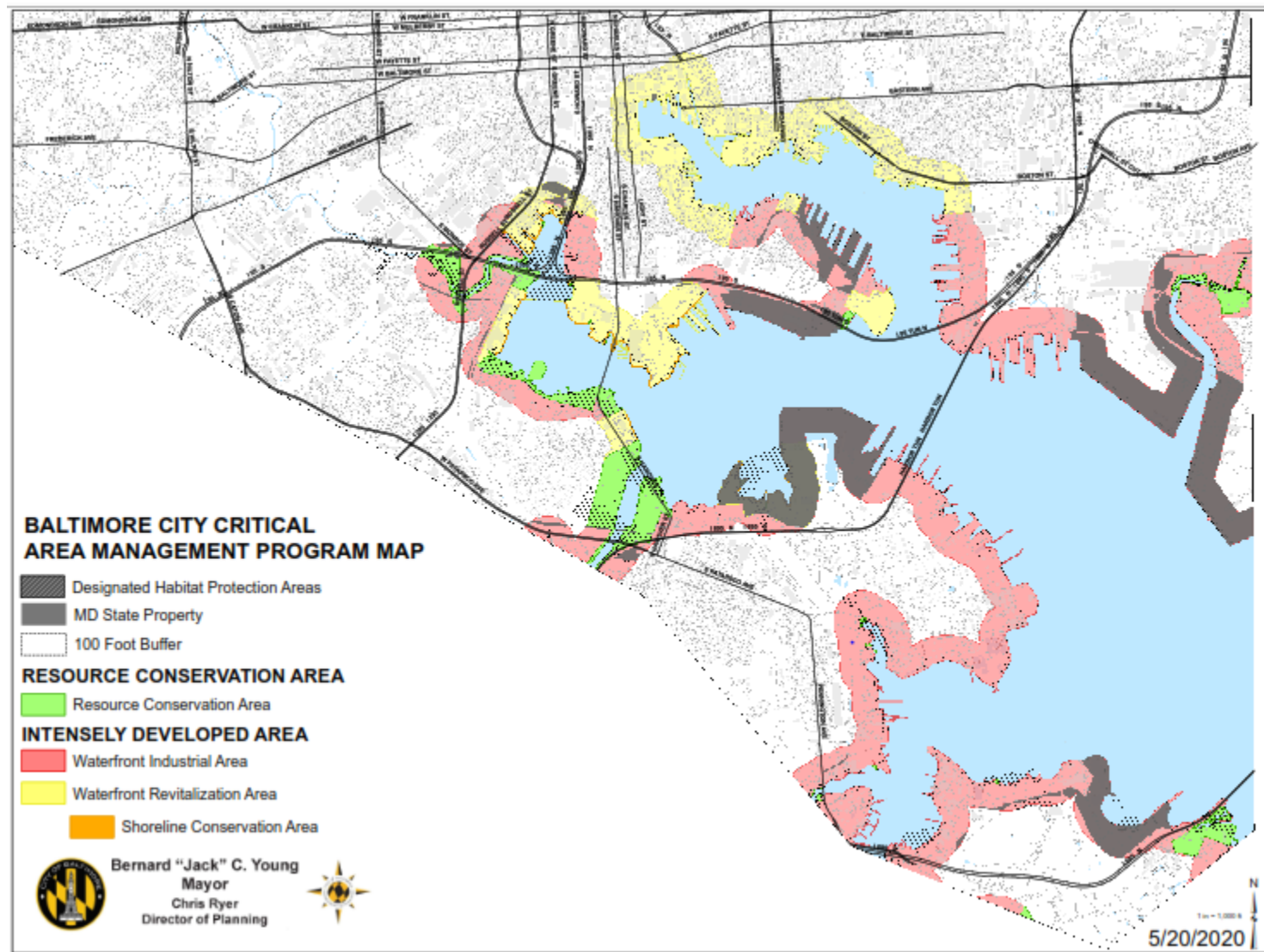


Critical Area Management Program (CAMP)

- Mandated by the State of Maryland
- Regulates development that happens within 1,000 FT from tidal waters of the Chesapeake Bay
- Requirements:
 - SWM: 10% P removal
 - 15% afforestation
 - Mitigation for vegetation removal
- Goals:
 - Improve water quality
 - Enhance coastal aesthetics
 - Sponsor wildlife habitat
- Compliance done through permits



CAMP Map



Nuisance Flood Plan

- Required by the State of Maryland
- Nuisance flooding = **high-tide** or **sunny-day** flooding
- Mapped areas that experience nuisance flooding
- Developed **2050** and **2100** scenarios based on MDOT's Climate Change Vulnerability tool
- Intention: **track** nuisance flood events that happen across the state
- **Environmental Justice**

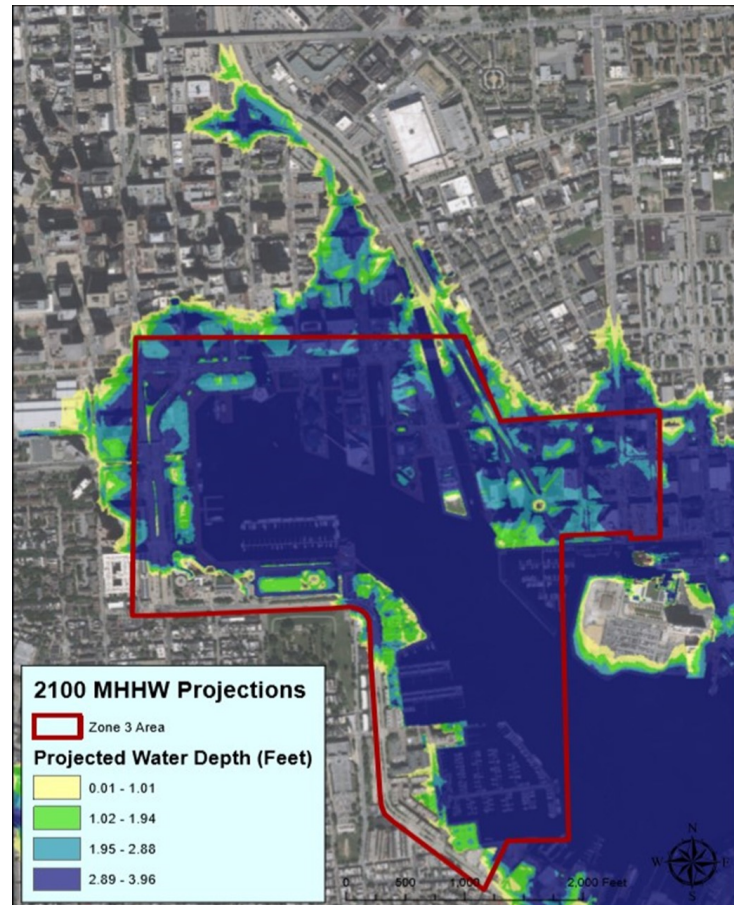
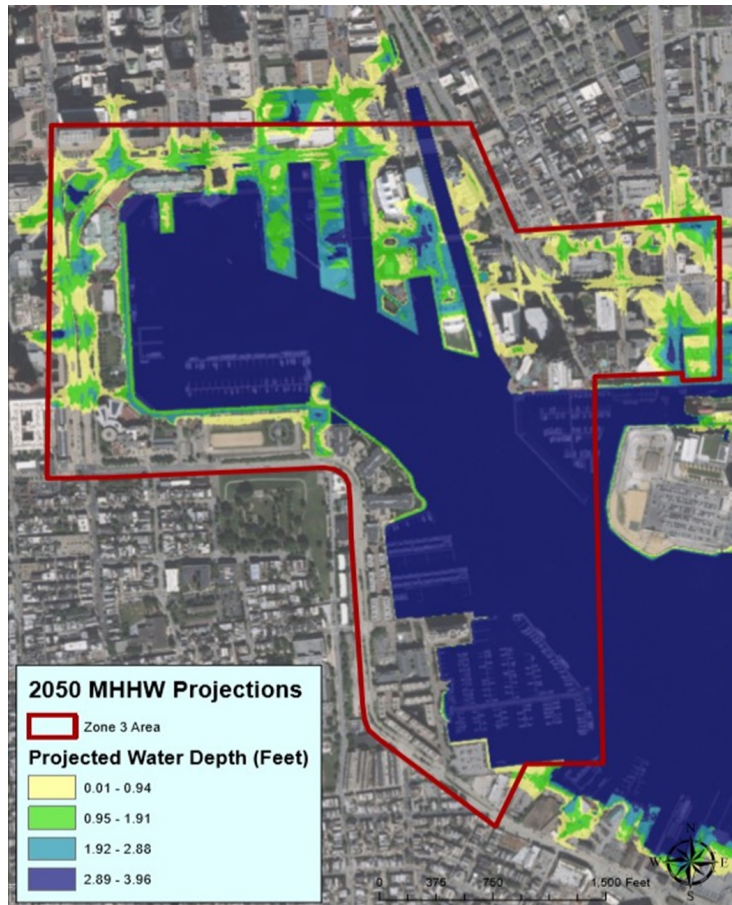


Nuisance Flood Plan



Nuisance Flood Plan

Model Year	Area (acres)	Overall Increase (%)
2015 (current)	8	---
2050	32	300%
2100	196	512%



Community Resiliency Hubs

Innovative and impactful community-centered initiative that increases community capacity to prepare for, withstand, and respond to natural hazard impacts and emergency situations.

Goals

- Enhances **community capacity and resiliency** in low-income communities of color
- Helps under-resourced communities prepare for, respond to, and recover from disasters by providing more **focused support, investment, and resource delivery**
- Improves **emergency response and recovery** in vulnerable neighborhoods
- Improves relationships and **builds trust** between the City and community
- Provides a **safe space** for residents in time of distress
- **Elevates community concerns** and voices to City government
- Hubs are as **trusted messengers**



Community Resiliency Hubs

Example: Stillmeadow Community Fellowship Church



Community Resiliency Hubs

Renewable Energy + Back-up Power



Community Resiliency Hubs

Food and Sandbag Distribution Efforts



Questions & Comments?

Bruna Attila, Coastal Planner/Tidal Floodplain Coordinator

Bruna.Attila@baltimorecity.gov

