

Welcome Rio Guanabara Bay Delegation to



Who We Are

In 1970, Maryland's Governor and legislators created Maryland Environmental Service to protect the state's air, land and water resources.

An Independent State Agency

MES is a State Agency and a Non-Profit Corporation.

This dual status allows the agency the flexibility to provide its many services with the backing of the State of Maryland and the efficiency of a private corporation.

How MES Works

- Established to be an affordable resource for county and municipal governments
- Non-profit
- Fee for service
- Counties and municipalities can quickly and efficiently enter into IGAs with MES for services
 - In accordance with language in the Annotated Code, counties and municipalities may enter into Inter-governmental agreements with MES without going through their procurement processes
- Can't respond to formal RFPs. We can however submit a proposal if specifically requested



MES has over 700 employees

Our Three Divisions

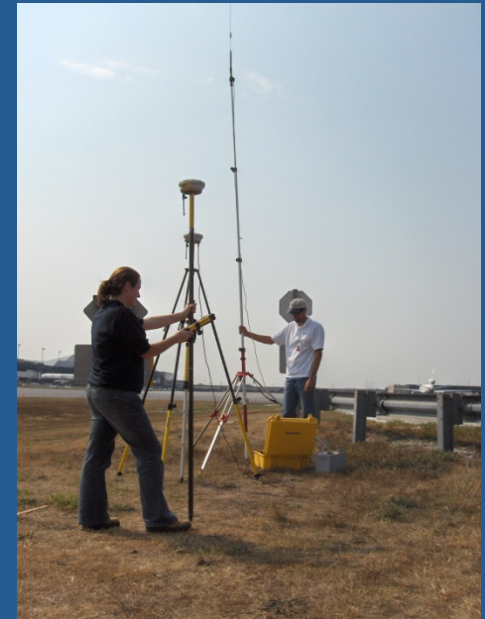
Environmental
Operations



Water &
Wastewater



Technical and
Environmental Services





ECI Co-generation Facility

Water and Wastewater

Jerry Wheeler, Executive Director

Operations and Maintenance

Engineering

We operate and maintain 138 private, municipal, and county plants; several shared-use facilities and 88 state-owned plants at correctional facilities, health facilities, rest areas, and State parks.

Maryland Correctional Institution



Dorsey Run





Cattail Creek

Technical and Environmental Services

Cecelia Donovan, Executive Director

Stormwater

Environmental Monitoring and Reporting

Environmental Dredging and Restoration

Energy Projects

Geographic Information Systems (GIS)

Masonville



Masonville



A photograph of the Masonville Cove Environmental Education Center. The building is a single-story structure with light green metal siding and a dark brown roof. It features several solar panels mounted on the roof and a red door. The building is surrounded by a black metal fence. In the background, there are trees and a blue sky with white clouds. A sign on the fence reads "Masonville Cove" with a globe icon and social media icons.

Masonville Cove Environmental Education Center

**Over 1,700 3rd, 4th, 5th Graders,
13 Area Schools participating**




On behalf of our client, MPA,
we are the largest creator of
wetlands in Maryland.

Hart-Miller: 601 Acres

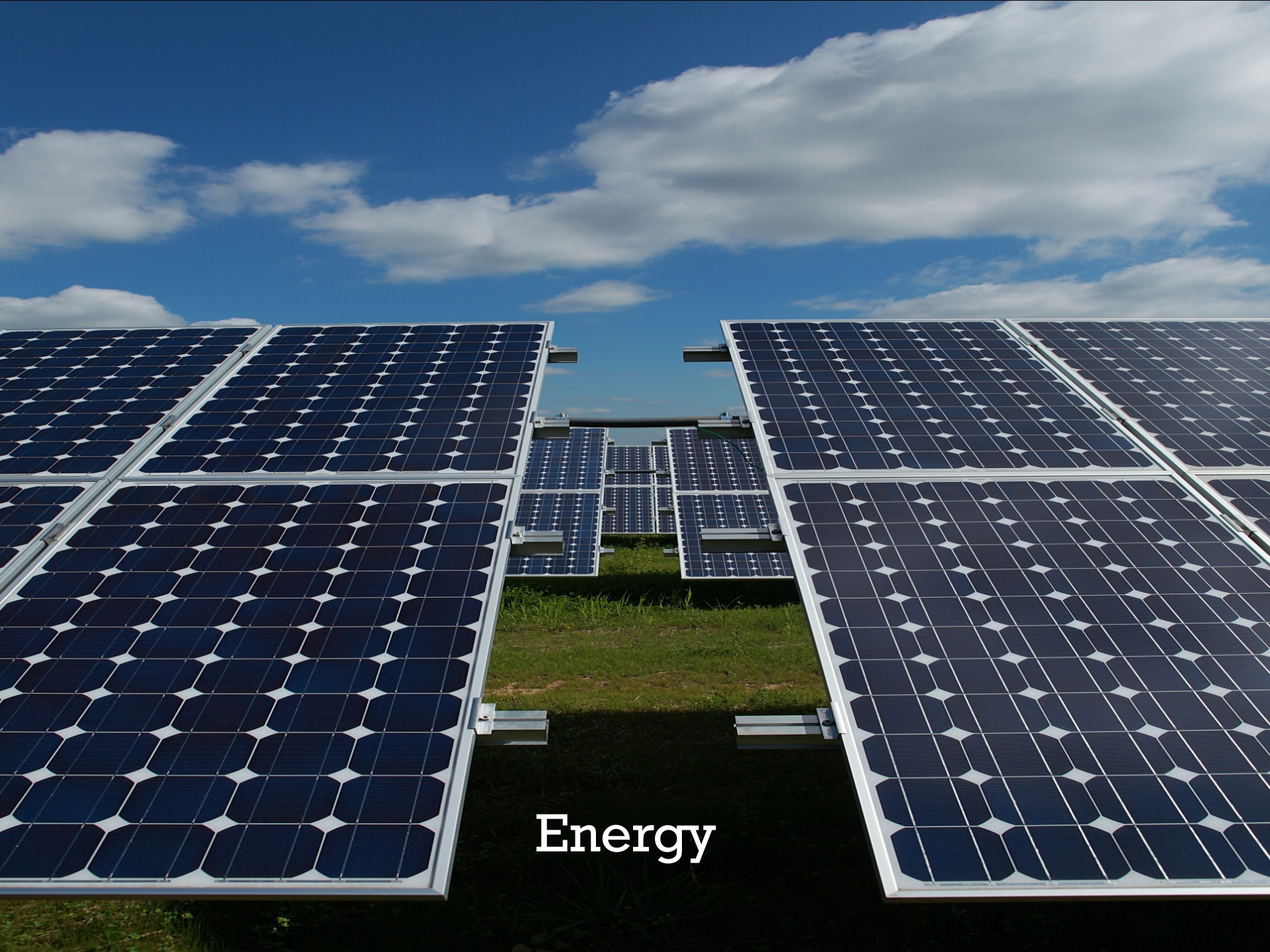
Poplar Island: 737 Acres

Swan Creek: 11 Acres

Poplar Island

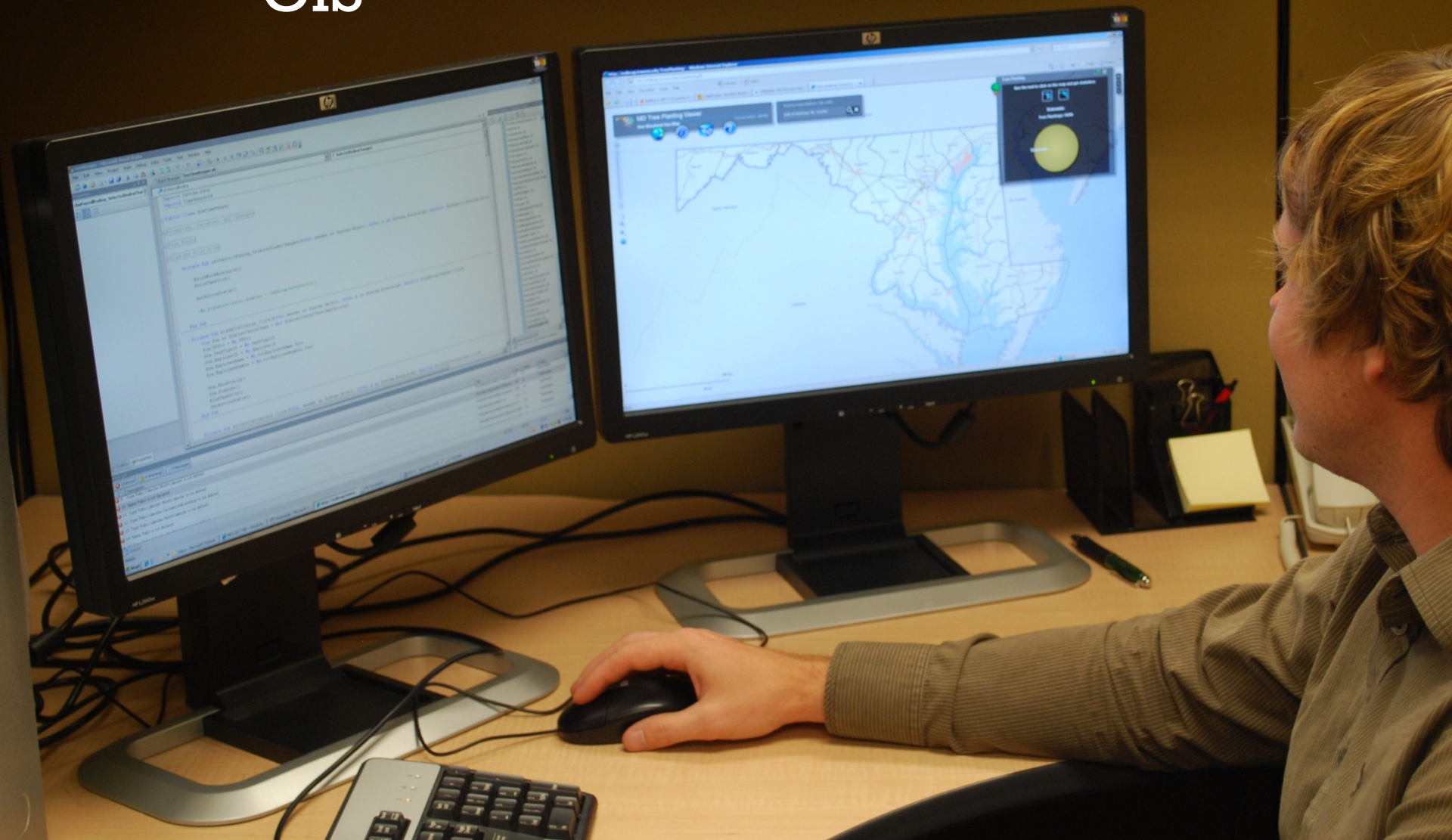
A close-up photograph of a small, spotted terrapin being held gently in a person's hand. The terrapin has a yellowish-green shell with dark, irregular spots and markings. Its head is slightly raised, and its eyes are dark and prominent. The background is blurred, showing what appears to be a wooden chair or table. The text "Terrapin Outreach for the Port of Baltimore" is overlaid in white at the bottom left of the image.

Terrapin Outreach for
the Port of Baltimore



Energy

GIS



STORMWATER

Pond repair at MDOT Headquarters



MES Headquarters



Environmental Operations

Steve Tomczewski, Executive Director

Solid Waste and Landfill Management

Recycling

Yard Waste Collection and Composting

ECI Co-Generation Plant

Environmental Operations Group

Projects are generally classified into four core areas:

- Recycling
- Composting
- Solid Waste Transfer
- Landfill Operation

Recycling

Baltimore County Central Acceptance Facility (CAF)



- MES began operations in 1975
- A state of the art single-stream recycling system is currently being installed at this facility at a cost of \$15 million.
- The new system will process approximately 80,000 tons of single-stream recyclables.
- System is scheduled to be operational by October 1, 2013.

Montgomery County Recycling Center (MRF)



- MES began operation in July 1997
- 29,500 tons of recyclable containers (aluminum, ferrous, plastic, and glass) were received in FY 2013
- Upgrades of plant equipment were completed in 2002
- The plant is outfitted with state-of-the-art sorting equipment

Midshore Regional Recycling Program (MRRP)



- MES began operating this program in 2012.
- MES personnel make collections from 48 recycling sites.
- Approximately 4,000 tons of glass, plastic, paper and metal are collected annually.
- The program is funded from a portion of the tipping fee collected at the Midshore Landfills and sale of collected commodities

Scrap Tire Management Program



- MES is contracted by MDE to administer scrap tire management operations.
- The Service cleans up and restores designated properties containing illegal scrap tire stockpiles.
- The Service administers scrap tire beneficial use projects.



Cleaning up Tire Dumps

04/22/2010

Composting

Prince George's County Yard Waste Composting Facility

- ◉ Leaves and grass are received at the facility and placed into composting windrows to create Leafgro®
- ◉ Leafgro® is sold in bulk from the facility
- ◉ Over 55,000 tons were received in FY 2013
- ◉ Currently doing a demonstration project at the facility utilizing pre-consumer food scraps



Prince George's County Yard Waste Composting Facility (con.)

FOOD WASTE PILOT PROJECT:

- Utilizes an in-vessel composting system from WL Gore Company.
- Advantages over windrow composting are: better process control, odor control, shorter processing time, leachate management and minimized space requirements.
- Project will provide needed data to determine best compost recipe for full scale food waste composting facility



Montgomery County Yard Trim Composting Facility

- ◉ Leaves and grass are received at the facility and placed into composting windrows to create Leafgro®
- ◉ Leafgro® is sold in bulk and bags from this facility
- ◉ 77,000 tons received in FY 2013
- ◉ This facility was recently ISO-14001 certified, one of only a few in the country



Solid Waste Transfer

Baltimore County Central Acceptance Facility (CAF)



- MES began transfer operations in 1996
- 360,000 tons of municipal solid waste were received in FY 2013
- A residential drop-off center (RDOC) was opened for operation in 2004 and accommodates 27,000 tons of residential waste and recyclables per year

Baltimore County Western Acceptance Facility (WAF)

- MES began transfer operations in 1976
- 91,000 tons of residential collection and self-haul residential waste was delivered in FY 2013
- A 195,000 ton/year commercial transfer station was opened in December 2005



Landfill Operation

Midshore II Regional Landfill



- Landfill opened in FY 2010
- Serves a four county area known as Midshore
- Facility is owned and operated by MES
- Facility received 101,000 tons in FY 2013
- Construction of the second cell will begin in 2014