

Maryland Environmental Service

SOLID WASTE SERVICES

**ENVIRONMENTAL
SOLUTIONS
FOR A BETTER
TOMORROW**



 www.menv.com

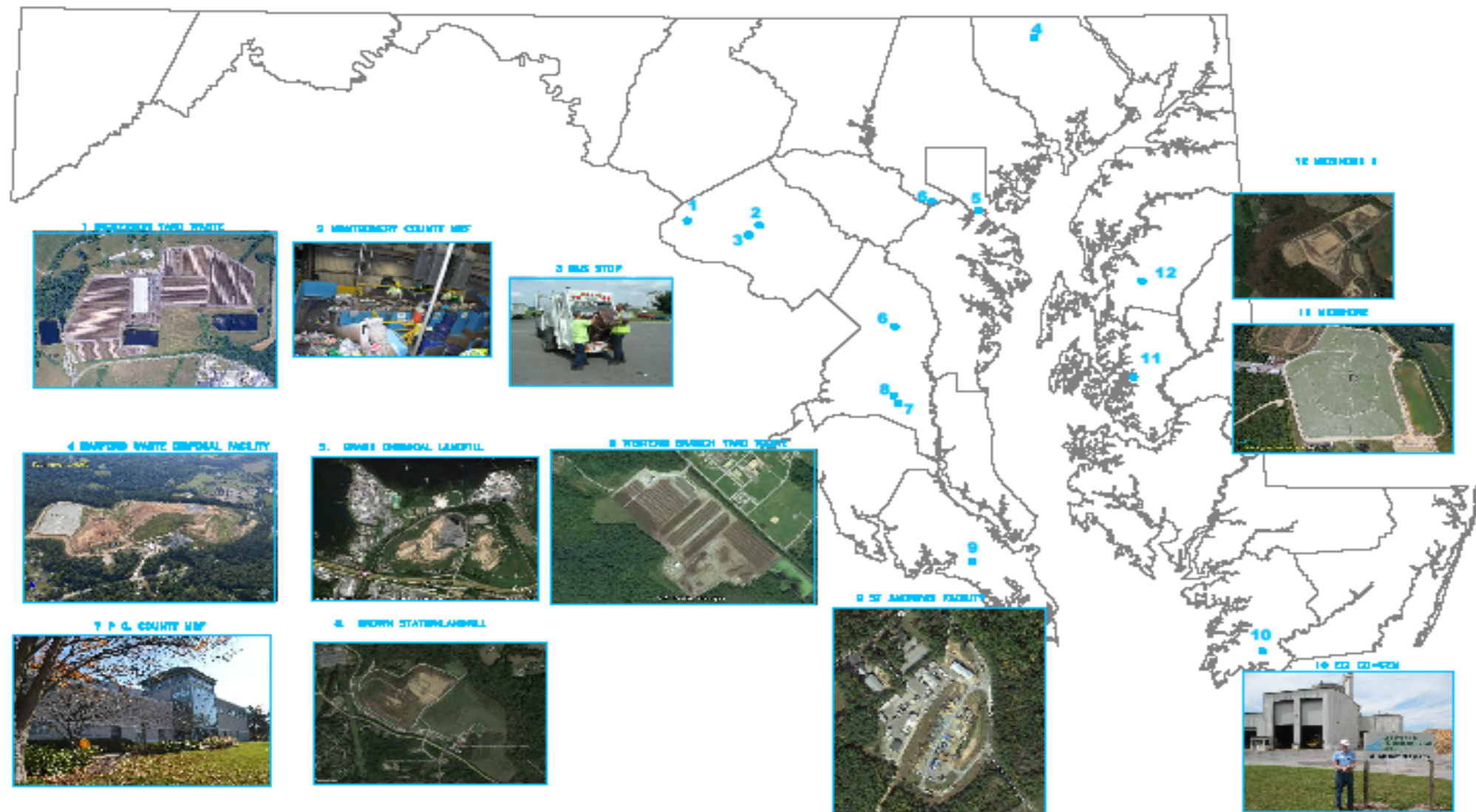


ENVIRONMENTAL OPERATIONS

MAJOR SERVICE AREAS

- Design, Construction, and Operation of Composting Facilities, Landfills, and Recycling Facilities
- CFC Recovery
- Energy Plant Operations
- Environmental Monitoring
- Mobile Wood Grinding
- Recyclables Marketing
- Transfer Operations
- Used Oil and Antifreeze Recycling

1





WHO WE ARE

- 271 Employees
- 13 Solid Waste Management and Steam and Power Facilities/Operations in Maryland
- Equipment Operators
- Engineers
- Administrators
- Scientists
- Marketing Specialists
- Innovators and Planners

What We Do

Integrated Solid Waste Management Services

- Recycling Operations and Marketing
- Composting Organics
- Biomass to Energy Project
- Solid Waste Collections/Transfer Operations
- Landfill Operations
- Technical Support-Environmental Monitoring Engineering and Solid Waste Planning
- Scrap Tire Management
- Used Oil and CFC Recycling



RECYCLING

4M citizens have access to MES operated recycling programs in 20 counties and Baltimore City, including:

- Material Recovery Facilities (MRF) in Prince George's and Montgomery Counties
 - Recently completed a \$6M upgrade to the Prince George's County MFR
- Durable Medical Equipment (DME) Refurbishment Program
 - Durable medical equipment is collected, cleaned, fixed and sanitized and then returned at no cost to people in need of the equipment



After a lower leg amputation, Sheila had difficulty and pain ambulating long distances with her prosthetic. Unable to afford one, she requested a power scooter from Maryland Durable Medical Equipment Re-Use. Sheila was delighted to receive a power scooter and is now able to navigate home and take independent trips to the grocery store and to doctors' appointments.



Maryland
Durable Medical
Equipment
Re-Use

RECYCLING

- Rural recycling collection for the Midshore Counties
- Statewide recycling programs, including the Used Oil Program, CFC Recovery, Household Hazardous Waste Collection, and more



USED OIL COLLECTION PROGRAM

- Partnership with the Maryland Department of Environment
- Program started in 1988
- Residential collection from do-it-yourself oil changes
- 131 used oil collections sites spread out over 19 counties and Baltimore city

To date MES has recycled more than 16 million gallons of used oil.



COMPOSTING

MES operates:

- Three, yard-trim composting operations, processing more than 180,000 tons of material into compost and mulch products per year
- A food scrap composting operation at the Prince George's County Organics Composting Facility
- Compost product is marketed as Leafgro® and Leafgro Gold®



WHAT IS COMPOST?

IT'S CLOSING THE LOOP

Compost feed stocks such as grass, leaves, brush, and food scraps are:

- Collected by the generator
- Hauled to the compost facility
- Processed in an aerobic hot composting process
- Tested and sold
- Utilized as a high-quality soil amendment to grow new food for the consumer who becomes the generator





Why Compost?

- Food scraps comprise 43.1% of compostable material and 14.9% of the total waste generated. The next largest portion of waste generated is paper products at 26.6%. In Maryland, this translates to an estimated 2.32 million tons of compostable materials and 998,630 tons of food waste generated each year. – MDE
- Finished high quality compost that is added to soil not only adds depleted nutrients, but builds soil fertility and higher crop yields.

FACILITY HISTORY

PRINCE GEORGE'S COUNTY YARD WASTE FACILITY

- MES has maintained and operated the compost facility and produced Leafgro® since 1990
- Traditionally accepted yard trim only, feed stock materials arrived loose or in plastic bags
- Plastic residuals were screened out at the end of the process and hauled to the landfill





FACILITY HISTORY

MONTGOMERY COUNTY COMPOSTING FACILITY

- The Montgomery County Yard Trim Composting Facility, located near Dickerson, MD, has been in operation since 1983. In addition, MES operates a transfer and grinding operation at the County's Derwood Facility.
- The facility processes leaf and yard waste and produces and sells both bulk and bagged Leafgro®.
- The facility processes about 77,000 tons of material a year and sells about 650,000 bags of Leafgro® and 19,351 yards of bulk Leafgro® per year.





LANDFILLS

- MES owns and operates the Midshore II landfill for Kent, Queen Anne's, Talbot, and Caroline Counties as part of the Midshore Regional Landfill Agreement. This agreement created an award-winning partnership between MES and the four counties to manage solid waste for 80 years.
- MES runs solid waste operations for Harford County, including the Harford County Waste Disposal Center in Street, MD.





LANDFILLS

- Statewide, The Group's Environmental Monitoring Division offers groundwater monitoring, landfill gas, and permitting services – currently, 35 distinct programs across 11 Counties.
- The Group's Engineering Division provides landfill engineering services to support county facilities.



MIDSHORE REGIONAL LANDFILL REGIONAL PARTNERSHIPS THAT WORK

In the early 1980s, Caroline, Queen Anne's, and Talbot Counties identified the need for a regional solid waste disposal solution.



Midshore II Construction



The counties determined it was in the public interest to leverage the economies of scale and opportunities for resource recovery that are best made available through a regional solid waste management system.

MIDSHORE REGIONAL LANDFILL AGREEMENT HISTORY

In March 1988, these counties and MES (Midshore Partners) executed an agreement to develop a regional landfill. Kent County joined the Midshore Partnership in 1992.

The Partnership members – Caroline, Kent, Queen Anne's, and Talbot Counties, and MES - have remained unchanged to this day.



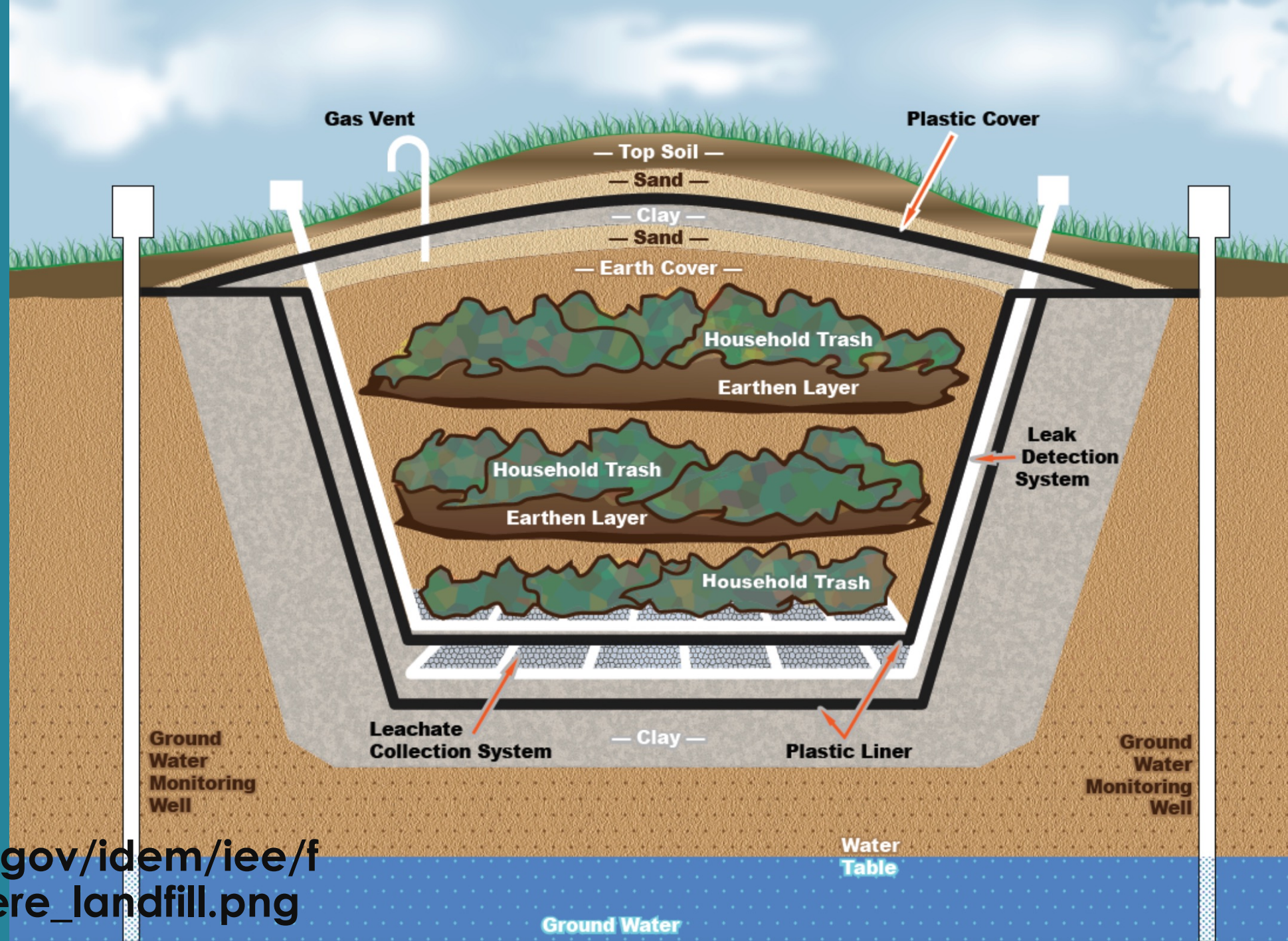
MIDSHORE REGIONAL LANDFILL AGREEMENT HISTORY

The framework of the agreement is for each county to secure land and host a regional solid waste management system for a 20-year period.

- Talbot County (Midshore I Landfill), 1991 – 2010
- Queen Anne's County (Midshore III Landfill), 2031 – 2050
- Caroline County (Midshore II Landfill), 2011 – 2030
- Kent County (TBD): 2051 - 2070



Midshore II Construction



- https://www.in.gov/idem/iee/files/lesson_where_landfill.png

MIDSHORE REGIONAL LANDFILL AGREEMENT

GENERAL OBLIGATIONS

MES:

- Design, permit, finance, construct, operate, and close Midshore landfills
- Issue indebtedness and charge tipping fees to cover capital and operating costs

Counties:

- Identify and acquire suitable landfill sites
- Transfer ownership of the site to MES for the construction of a municipal solid waste (MSW) landfill with an operating life of approximately 20 years (service period).
- Pay a supplemental fee if total costs exceed total revenues, including debt service. To date, the Midshore Counties have never had to pay a supplemental fee.

GET IN TOUCH

Maryland Environmental Service

259 Najoles Road, Millersville MD 21108

410-729-8200 | www.menv.com

Follow Us



THANK YOU



 www.menv.com