



# WATER 2030

## WATER SAFETY AND SECURITY FOR CLIMATE AMBITION

**inea**

AMBIENTE E  
SUSTENTABILIDADE



GOV  
RJ

Rio20  
É HORA DE AGIR  
30



# STATE WATER SAFETY AND SECURITY PROGRAM





# CONCESSION OF SANITATION

- **USD 5 BI COLLECTED THROUGH AUCTION**
- **10 MILLION PEOPLE REACHED**
- **UNIVERSALIZATION OF BASIC SANITATION**
- **46.000 JOBS AND INCOME GENERATION**







# **BLUE METROPOLIS RECOVERY OF GUANABARA BAY**

- IMPLEMENTATION OF A DRAINANCE NETWORK  
IN DRY-WEATHER SEWAGE INTAKES**
- BASIC SANITATION UNIVERSALIZATION BY 2033**
- 20 ACTIONS FOR THE REVITALIZATION OF  
GUANABARA BAY**



# NATURE-BASED SOLUTIONS FOR A BLUE METROPOLIS



**SOCIAL**



**HUMAN HEALTH  
AND FOOD  
SECURITY**



**ECONOMIC**



**SUSTAINABLE  
GROWTH  
GREEN JOBS**



**ENVIRONMENTAL**



**ECOSYSTEM  
PROTECTION  
AND RECOVERY**







# **NATURE-BASED SOLUTIONS FOR A BLUE METROPOLIS**

## **WHY IS THE MATA ATLÂNTICA RAIN FOREST IMPORTANT FOR WATER?**

- **PROTECT HEADWATERS FOR THE  
PRESERVATION OF SPRINGS TO GUARANTEE  
HUMAN WATER SUPPLY**
- **GROUNDWATER RECHARGE**
- **PROTECT RIVERS FROM SILTING AND  
FLOODING**



## CONSERVATION OF BIODIVERSITY

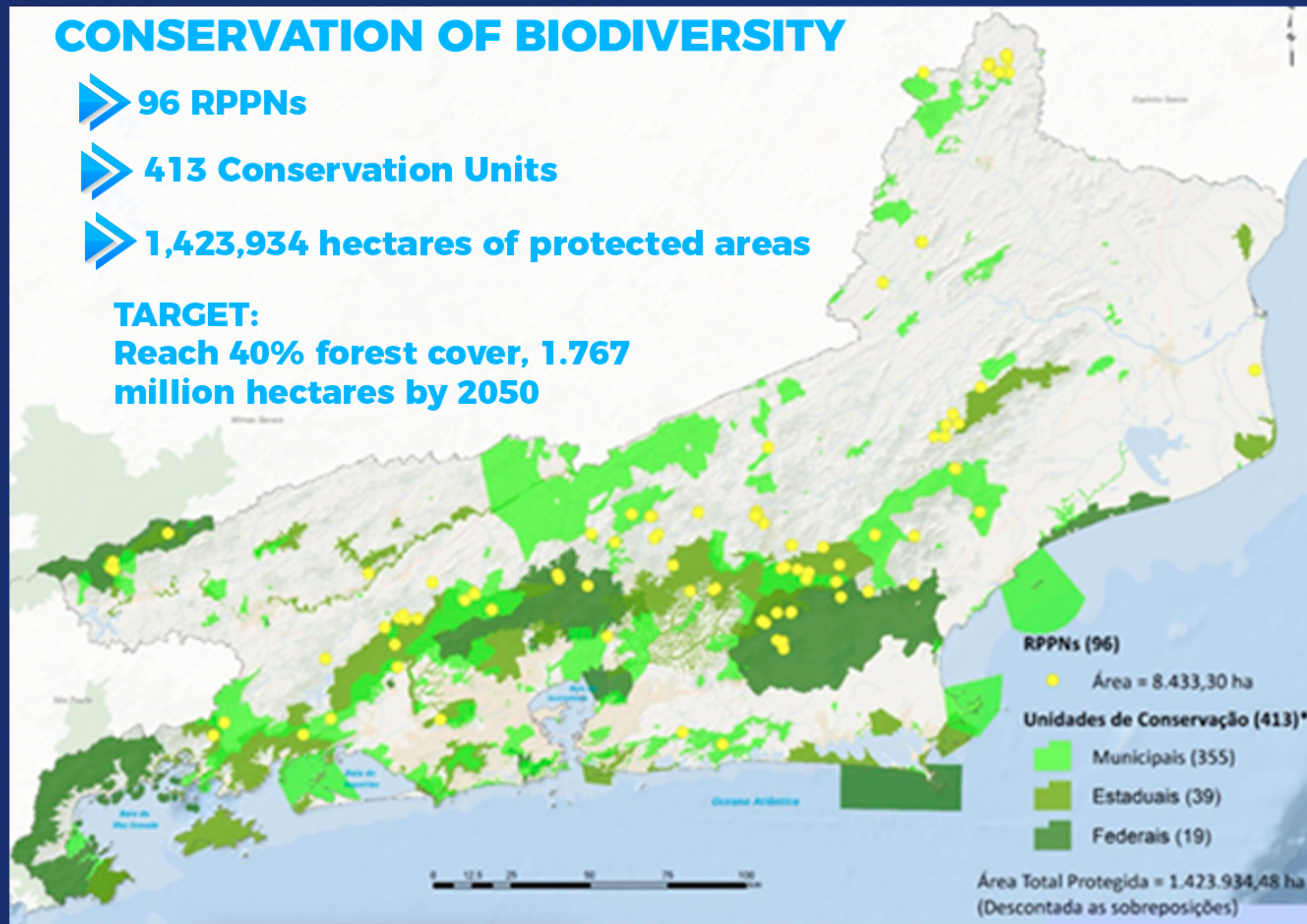
➤ 96 RPPNs

➤ 413 Conservation Units

➤ 1,423,934 hectares of protected areas

### TARGET:

Reach 40% forest cover, 1.767 million hectares by 2050







# **TOMORROW'S FORESTS**

## **ACHIEVING GOALS**

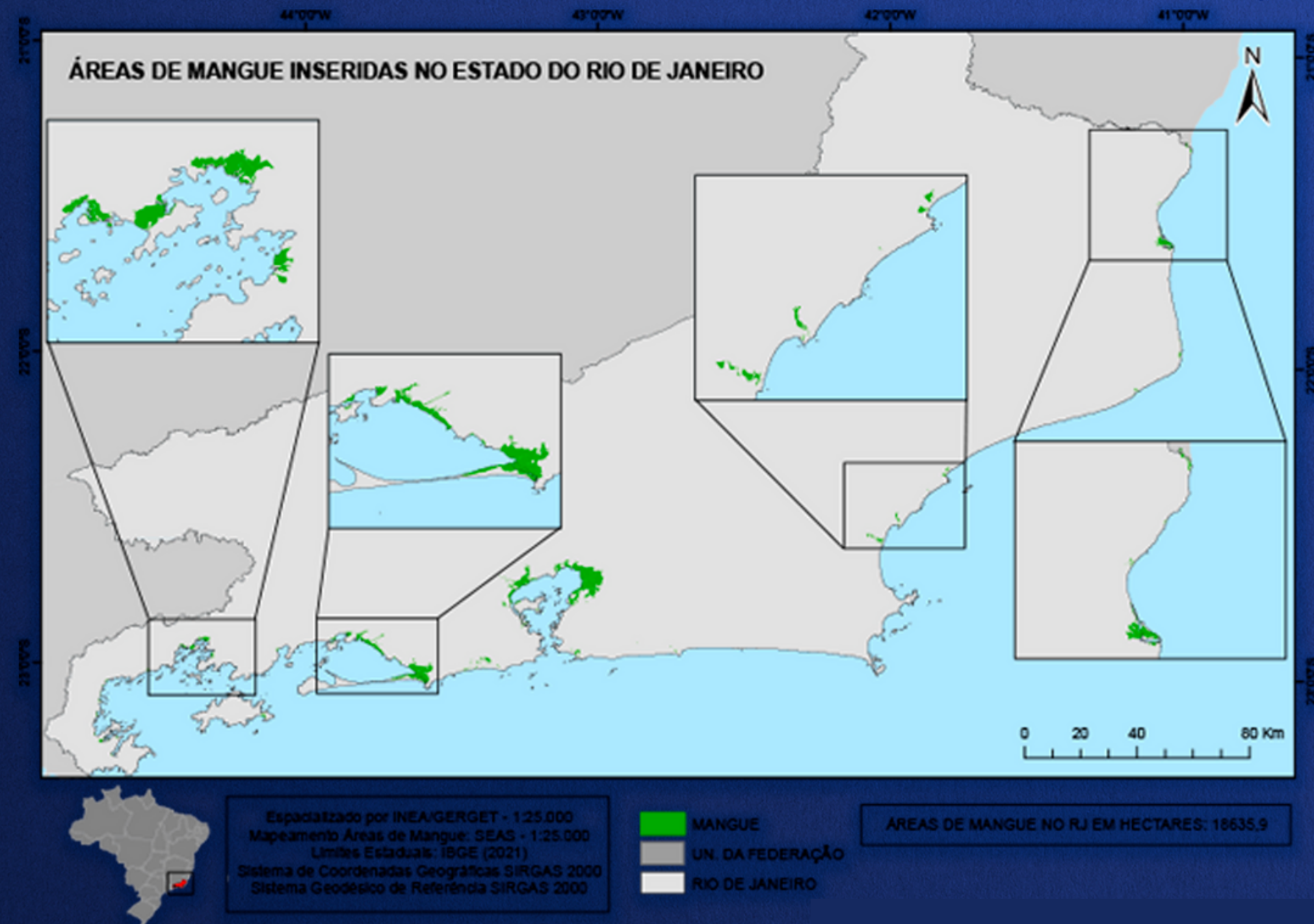
- **USD 120 MILLION FOR INVESTMENT IN RESTORATION OVER THE NEXT 5 YEARS**
- **MATA ATLÂNTICA RAIN FOREST FUND, CONSISTING OF A FOREST RESTORATION PORTFOLIO AND A DONATION PORTFOLIO**





# Tomorrow's Forests

**MANGROVE AREAS IN RIO DE JANEIRO IN HECTARES: 18635,9**





# ATLANTIC FOREST CONNECTION

- ENVIRONMENTAL SERVICES PAYMENTS (PSA)
- 285 RURAL PRODUCES IN STRATEGIC AREAS
- RECOVERY AND MAINTENANCE OF NEGATIVE VEGETATION
- PARAIBA DO SUL RIVER BASIN





# LOOKING TO THE GREEN

- **MONITORS, THE ILLEGAL DEFORESTATION  
OF ATLANTIC FOREST REMNANTS**
- **WHOLE STATE OF RIO DE JANEIRO**
- **HIGH RESOLUTION SATELLITES**





An aerial photograph of a coastline. The water is a vibrant turquoise color, and the shoreline is composed of dark, jagged rocks. The sky is a deep blue, and the overall scene is serene and natural.

# **OPEN INNOVATION PROJECT FOR THE DEVELOPMENT OF THE BLUE ECONOMY**

- 44% OF BRAZILIAN GDP,**
- DIRECTLY BENEFITING THE LIVES OF OVER 10.4 MILLION PEOPLE,**
- GENERATING OVER 119,000 DIRECT JOBS IN 2019**
- FIRST BLUETECH ACCELERATION PROGRAM IN LATIN AMERICA**

**OBJECTIVE:  
CONNECT DISRUPTIVE STARTUPS THAT SOLVE  
SUSTAINABILITY CHALLENGES IN THE SEA ECONOMY  
AND SANITATION SECTORS IN THE RIO DE JANEIRO STATE.**



# SUSTAINABLE ASSETS PLATAFORM

- CARBON
- CIRCULAR ECONOMY
- BIODIVERSITY
- BLUE CARBON
- OTHER ENVIRONMENTAL  
AND SANITATION AREA CREDITS

**OBJECTIVE:**  
**INSTALLATION OF A PLATFORM / EXCHANGE TO PROMOTE  
TRADING INFRASTRUCTURE TO SUPPORT HIGH VOLUME OF  
OPERATION WITH SUSTAINABLE ASSETS**





# Rio2030

É HORA DE AGIR  
IT'S TIME TO ACT!

**AMBIENTE E  
SUSTENTABILIDADE**



**GOV  
RJ**