

HOW DO PLASTICS GET INTO THE CHESAPEAKE BAY?

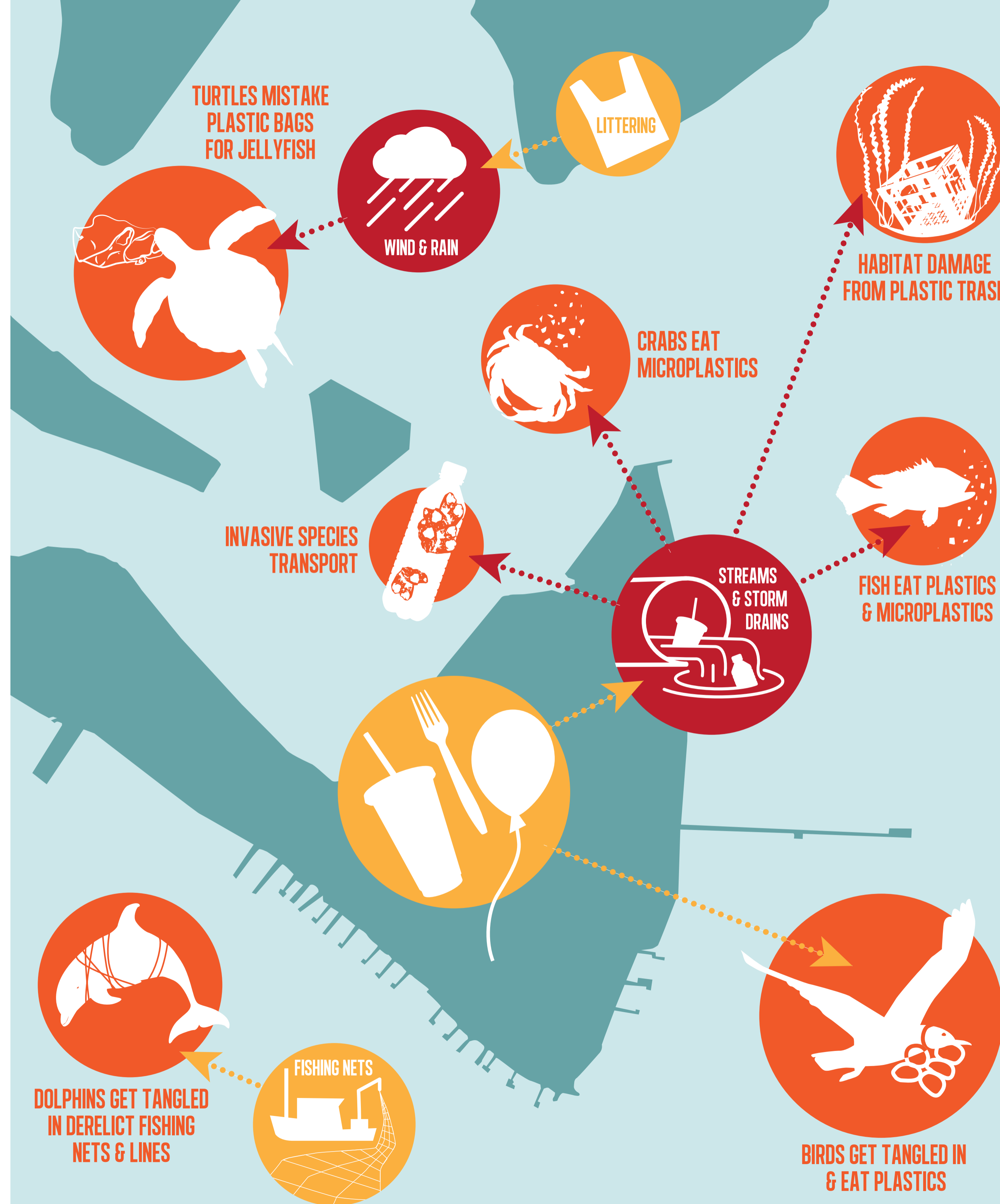
An estimated 8 million tons of plastic enters the water from land globally every year! This includes many single-use items, like plastic straws, bags, bottles and take-out containers.

Plastic doesn't just enter waterways through boat-based activities. Most plastic marine pollution comes from activities on land. Strong rain or winds can blow over trash cans and wash litter from roads directly into local waterways or into storm drains that flow into rivers.

Here, small streams and rivers flow into the Patuxent River, which leads to the Chesapeake Bay, and the Atlantic Ocean.

WHY SHOULD WE CARE?

Plastics can harm and kill wildlife, pollute our beaches and waterways, and cost millions of taxpayer dollars to cleanup every year. Chemicals are also within and on plastics and as these chemicals interact with our environment, they may accumulate in the things we eat.



WHAT CAN YOU DO?

-  Skip the straws, plastic bags, and plastic take-out items!
-  Reduce, Reuse, and Recycle...or just Refuse to Use!
-  Participate in beach and community greenspace cleanups!



PLASTICWATCH

Visit our website to learn more
www.umces.edu/plasticwatch



The PlasticWatch project is funded using federal funds under award number NA16NOS4190170 from NOAA, U.S. Department of Commerce. The statements, findings, conclusions, and recommendations are those of the author and do not necessarily reflect the views of NOAA or the U.S. Department of Commerce.